

Matheny Grant Will Ease Hospital Transitions

Matheny has received a \$300,000 grant from the Robert Wood Johnson Foundation through its New Jersey Health Initiatives program to develop, implement and test a model for improving the quality of transitional care for persons with chronic health issues and medical complexities associated with developmental disabilities. Matheny's partners in this project are Morristown Medical Center in Morristown, NJ, and the Robert Wood Johnson University Hospital in New Brunswick, NJ.

For Matheny patients, the transition to and from acute care hospitals is difficult. Over the past several years, Matheny has developed two primary mechanisms to help acute care staff members understand and address its patients' needs better: a trip nurse and a mini medical record.

The RWJF grant will enable Matheny to partner with MMC and RWJUH to formalize those two mechanisms and provide an unusual degree of interaction between Matheny staff and acute care hospital staff through the establishment of a nursing position dedicated just to the transition process. These two acute care hospitals were selected for this project because they treat the majority of Matheny patients who require acute care hospitalization. Grant funds have allowed Matheny to hire a full-time transitional nurse who will accompany

patients transported to these two acute care hospitals, encourage full and effective use of information in the patients' "mini-record", follow the patients throughout their hospitalization

of persons served in the 12 months preceding the project.

Communication on a day-to-day basis between Matheny and the staff at the participating acute care hospitals will be managed by Lavelle. Key Matheny personnel at the administration level are: Dr. Gary Eddey, chief medical officer, and Cathy Church, RN, director of nursing services. Primary contacts at MMC are: Dr. Stanley Fiel, chair of the department of medicine, and Trish O'Keefe, RN, director of nursing and acute care services. At RWJUH, the primary contact is Dr. Alfred Tallia, chair, department of family medicine.



New transitional nurse Jeanne Lavelle, RN, center, confers with Lisa McKenna, RN, left, and Dr. Surbarkash Singh, staff physician.

to facilitate discharge planning and foster development of resources needed for appropriate inpatient care and effective post-hospital transition.

The new transitional nurse is Jeanne Lavelle, RN. The project's goal is to reduce the number of

More on Matheny's new transitional nurse, page 2

hospital readmissions of patients with developmental disabilities. In evaluating the results of this project, Matheny's Institute for Research in Developmental Disabilities will examine the length of time between hospitalizations, numbers of re-hospitalizations and number of emergency room visits in the target population during the course of the project. That data will be compared with data derived from clinical records

The RWJF focuses on the pressing health and health care issues facing our country. As the nation's largest philanthropy devoted exclusively to improving the health and health care of all Americans, the Foundation works with a diverse group of organizations and individuals to identify solutions and achieve comprehensive, meaningful and timely change. For more than 35 years, the Foundation has brought experience, commitment and a rigorous, balanced approach to the problems that affect the health and health care of those it serves. When it comes to helping Americans lead healthier lives and get the care they need, the Foundation expects to make a difference in your lifetime. For more information, visit www.rwif.org.

Wheels for Whitney: Adaptive Wheelchair Helps Young Woman Navigate Around Campus

In April 2001, nine-year-old Whitney Weldon was diagnosed as having Fibrodysplasia Ossificans Progressiva (FOP), a rare genetic disorder characterized by the abnormal growth of bone in soft tissue. FOP is the only known condition where one organ can transform into another, where muscles, tissues and ligaments develop into bone. The disease progressively disables the body as new bone uses joints and creates immobility.

In March of this year, Whitney and her parents, Bill and Hilary Weldon, of New Vernon, NJ, visited Matheny. Whitney was getting ready to enter Georgetown University in the fall, and her parents were hoping therapists and rehab technicians could evaluate her for adaptive equipment that might make her life a little easier.

Since Whitney's mobility was extremely limited, Matheny recommended the Permobil C500, a front wheel drive power wheelchair with a standing feature. Whitney was not able to use a

conventional wheelchair, but this model, according to Jon DaSilva, Matheny rehab technician, "allows the seating system to come up to meet her. And we added a custom foam in place to help with her comfort level."


DaSilva recalls that Whitney, "was real resistant to using a wheelchair." But that has changed. "I'm doing great," she says. "The wheelchair has worked out real well for me. I can get around faster than if I was on foot, and I have the freedom to get out of it if I want to." Some of her early resistance, she admits, was because "I was worried that I wouldn't have a lot of friends because it was different," but the wheelchair, she says, has actually contributed to the fun of the college experience. "I can get places quicker. People don't have to wait on me. I have to wait on them now."

DaSilva says Stephen Burke, Permobil's representative in northern New Jersey, "has been a huge resource for us, not just with Whitney but with other clients as well." Whitney is appreciative that Matheny has



Whitney Weldon in her power wheelchair.

given her a Permobil contact in the Washington, DC area. "If I have a problem now," she says, "they will send someone who's closer to me to make adjustments and stuff."

There is tremendous need for FOP research funding. The Weldon family, through the Weldon FOP Research Fund (www.weldonfop.org), has raised awareness and millions of dollars for the FOP Laboratory at the University of Pennsylvania School of Medicine. 

Board of Trustees

Chair

Daniel F. McLaughlin

Vice Chairs

William A. Kraus, Esq.

President

Steven M. Proctor

Members at Large

Kenneth Alter	Brian M. Foley, Esq.
Valerie Byrd Anderson	Peter M. Holloway
Pam Cembrook	Linda E. Horton
June Cioppettini	Arnold H. Rosenheck, DMD
Edana Desatnick	Gary A. Squires
Gary Eddy, MD	Gerald Sydel, DDS
Bruce Fisher	David Szott

Trustees Emeritus

Sally Chubb	Gordon A. Millsbaugh, Jr.
Gretchen W. Johnson	Sandra Stark

Matheny's New Transitional Nurse

Jeanne Lavelle, RN, a resident of Morris Township, NJ, has been a member of the Matheny nursing staff since February 2010. She has previously worked in the CNIII outpatient clinic and chemotherapy area at Memorial Sloan Kettering Cancer Center in New York City and has been a grant reviewer for Susan G. Komen for the Cure North Jersey. In her new position, she will accompany patients transported to Morristown Medical Center and Robert Wood Johnson University

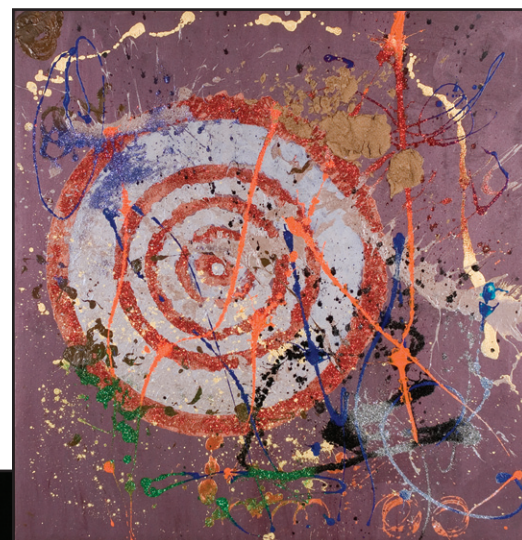
Hospital, encourage full and effective use of information in the patients' "mini-record", follow the patients throughout their hospitalization to facilitate discharge planning and foster development of resources needed for appropriate inpatient care and effective post-hospital transition. She is "looking forward to being an advocate for our patients. The whole plan is cutting edge and exciting. It's an opportunity to provide better care and support for the families of our patients."

Full Circle 2011 Showcases Talent And Passion of Artists with Disabilities

Full Circle 2011 Dimensions, the annual celebration of Matheny's unique Arts Access Program, highlighted all the different dimensions of the program's artists. "They may be painters," explained Eileen Murray, Arts Access director. "They may be playwrights; they may be dancers or choreographers. Arts Access gives them the opportunity to sample all that and to find their one passion or several different passions." Arts Access enables people with disabilities to create fine art, assisted by professional artist-facilitators. At

Matheny patients often have great difficulty communicating, but, "Arts Access provides them with an opportunity for creative expression." It reflects, he added, Matheny's efforts, "to enrich their entire lives, to provide them with a full spectrum of life experiences." Pamela Cembrook, a resident of Bernardsville and Matheny trustee, was honorary chair of the event. *Me*

Right: Untitled by Shaleena Tomassini.



Jessica Evans performing her dance, "My Brain's on Fire" with professional dancers and actors.

Full Circle 2011, more than 40 pieces of visual art were exhibited during a reception in the gallery. The exhibit was curated by Madison-based artist, Dan Fenelon. A stage presentation showcased dance, drama and poetry created by the artists. Professional dancers and actors, some Arts Access staff members, performed with the Arts Access artists.

Speaking to a packed theater prior to the stage presentation, Steve Proctor, Matheny president, pointed out that

Arc of Mercer adapts Arts Access system, page 7



Actress Alexandra Hellquist reading "My Pakistani Princess", written by Mike Cornely, right.



Exhibit curator Dan Fenelon and his wife, Kadie Dempsey.



Ann Painter, CEO of the Visiting Nurse Association of Somerset Hills, and her husband, Robert.

FULL CIRCLE 2011 PATRONS/DONORS

GOLD PATRON

Mr. and Mrs. Man S. Yu
(In memory of Albert Yu)

SILVER PATRONS

Dr. and Mrs. Richard M. Goldrosen
David Teiger

BRONZE PATRONS

Mr. and Mrs. John Cembrook
Mr. and Mrs. John Dreher
Mr. and Mrs. Lawrence Durr
Mr. and Mrs. Daniel McLaughlin

FOOD AND BEVERAGE STATIONS

Ciao Restaurant, Basking Ridge • cocoLuxe Fine Pastries, Peapack • Due Terre Enoteca, Bernardsville
Gladstone Tavern, Gladstone • 3West Restaurant, Basking Ridge • Village Office Supply, Somerset

At Matheny, Physical Therapy is Measured by Long-Term Goals

Erin Leach remembers sitting in her advanced biology class during her senior year at Jefferson Township High School in Oak Ridge, NJ. “My classmates were bored,” she recalls, “but all I could think about was how fascinating all this information was. I thought, ‘Wow, this is what your body is made of, and this is what makes it move.’” That interest led her to pursue a career in physical therapy, earning both master’s and doctor of physical therapy degrees from the University of Scranton. The Sparta, NJ, resident worked in sports medicine and then tried a nursing home setting before moving on to work with children with developmental disabilities – first at Cerebral Palsy of North Jersey’s Horizon High School in Livingston and, since November 2008, at Matheny.

“I’ve ended up enjoying Matheny more than anything else I’ve ever done,” Leach says. “In a nursing home, you can improve somebody’s function pretty significantly, but here, with the kids, there is just so much more energy. I started to realize that what I do can really help them forever. With this population, even though the change doesn’t happen quickly, I always know I’m doing something with them they wouldn’t otherwise get the opportunity to do – like sitting up or standing up by themselves. I’ve learned to shift my focus and think more long-term. I can look back and say, ‘Wow, they’re doing this much better’ – even if it may just be the smallest little thing.”

Leach’s dedication has been recognized. She was voted the Related Service Provider of the Year by her

peers at the Matheny School. Saying she was “surprised when I won this,” Leach acknowledges that integrating physical therapy into classroom activities requires creativity. One




Physical therapist Erin Leach works on sitting balance and reaching skills with eight-year-old student Niara Holmes.

example, she points out, involved a classroom lesson about where different articles of clothing belong on the human body. “The teacher had a big cutout of a person, and the students were working on where the shirt goes, where the shoes go, things like that. They had Velcro clothing and shoes. So, when it was my student’s turn, I helped her walk up to the big cutout and put the shoes on. It was the perfect activity for what she was working on.”

At Matheny, physical therapy provides therapeutic interventions to

help students and patients attain their optimal level of function. PTs take a personal and client-specific approach to addressing each person’s individual needs. Leach is part of a relatively new concept called the Professional Learning Group (PLG), which is a group of teachers, aides and a physical, occupational and speech therapist. “We talk about what we want to do to enhance the lives of the students,” she says. “There are little things about the students that some people know and some people don’t know. We thought it was a really good idea to make a communications card that they could have on their wheelchairs. So, when somebody new comes in and wants to have a conversation with them, it would be good to know where their visual field is or if they have a ‘yes/no’ response or if they’re hard of hearing.”

One of the most difficult aspects of Leach’s job, she says, is, “finding out what motivates the students. You really have to try to understand that from the child’s perspective. ‘What does this mean to him/her?’ ‘Is this something he/she really wants to do?’ ‘How can I change it so he/she will want to do it?’ It’s hard, and I think everyone struggles with that. You just have to take the time to get to know the child. You have to pay attention to the nuances and the communications cues. Sometimes, you just have to shift your focus and take a step back.” Leach would be the first to admit that she receives lots of help. “I feel like the staff is really, really supportive,” she says. “There are people here with a ton of experience, and everyone is pretty open-minded. There’s an easy exchange of ideas.” 

Flexibility and Patience are Keys to Matheny Teacher's Success

Karen Deland first taught at The Matheny School in 1979, and she remembers one of the non-verbal students using an autocom, a monotone oral speech device. "Matheny was a forerunner in technology then," she says, and "Matheny is still doing it. It is still top-of-the line technology-wise for the students, and everybody's treatment," she emphasizes, "is different and individualized." Deland, who is a resident of Berkeley Heights, left Matheny in 1980 to accept a teaching position in the Franklin Township Public School District, in Quakertown, NJ. After earning a law degree and raising a family, she returned to Matheny in 2009 and last year was named the school's Educator of the Year. In her classes she uses a Smart Board, which helps

aspects – in scheduling, in progress, in communication. You just kind of have to roll with it. Nothing is set in stone. You may be working on phonetics, and a student will blurt out something that you did yesterday. That is great gratification. We were working on compound words," she continues,

Deland admits. "This morning we had a great big Scrabble board up there, and all the students were playing. We played Scrabble using phonetics and vocabulary words, and they can do it. If you take the time and break things down into teeny, tiny task analysis steps, they can communicate.



Karen Deland with one of her students, 15-year-old Daniel Gaudreau.

You just have to be patient and flexible." Having spent a lot of time educating her students about the impact the Americans with Disabilities Act has had on their lives, Deland also feels very strongly about helping her students be part of the community and part of society. "If we cannot provide our population with the ability to be out in public, we have done a disservice to them." Her class recently played miniature golf at Hyatt Hills, a handicapped

accessible course in Clark, NJ. "I can put a student on a bus and take her to Shoprite or take her to a golf course. I can't think of any day that goes by that somebody doesn't warm my heart."

Deland received her BS degree in elementary education and special education from Vanderbilt University's College of Education and Human Development and her JD from the Seton Hall University Law School. Her students are all teenagers, and she has two teenagers at home, who are the same age. "It's very heartwarming and enlightening," she says, "to see that my own kids can walk in here and feel at home."

and then the next day we were doing something else, and one of the students said, 'bedroom'. Wow! She remembered it."

"It's very heartwarming and enlightening to see that my own kids can walk in here and feel at home."

One of Deland's students is quasi-verbal; another says a few words; and the other four are non-verbal. "Adapting to their different modes of communication is challenging,"

Deland admits. "This morning we had a great big Scrabble board up there, and all the students were playing. We played Scrabble using phonetics and vocabulary words, and they can do it. If you take the time and break things down into teeny, tiny task analysis steps, they can communicate.

Deland received her BS degree in elementary education and special education from Vanderbilt University's College of Education and Human Development and her JD from the Seton Hall University Law School.

Her students are all teenagers, and she has two teenagers at home, who are the same age. "It's very heartwarming and enlightening," she says, "to see that my own kids can walk in here and feel at home."

Recreation Therapy Intern Benefits from Unique Matheny Experience

“What’s really good about the recreation therapy program at Matheny,” says Leah Friedman, “is that the students and patients aren’t identified by their disabilities; they are identified by their likes and dislikes. You don’t just look at someone and say, ‘Oh, he has cerebral palsy.’ You look at him and say, ‘He likes to play soccer.’”

Friedman, who grew up in Short Hills, NJ, enrolled in the fall of 2007 at Ithaca College as a freshman majoring in therapeutic recreation. “Most people don’t do that,” she says, “but my mom was an alumnus of Ithaca, and my senior year of high school she had gotten this alumni DVD, and rec therapy was on it. So, I was watching it with her and said, ‘I’d really like to do that.’” Friedman received her B.S. degree in therapeutic recreation in May 2011, which included an internship requirement. And since she had been a volunteer at Matheny during the summer of 2010, “this was on the top of my list of places I wanted to intern.”

Leah Friedman, participating in a yoga class with 14-year-old student, Daeon Troutman.

She spent 15 weeks at Matheny last summer, splitting her time between working with adults in the Adult Services program and spending time in the classroom with children in The Matheny School. What really

“It’s just a great place. I think everyone should know about it and visit.”

impressed her in the school was the interdisciplinary teams of therapists who worked together with the teachers. “In the classroom,” she says, “I would be working directly with occupational therapists, speech therapists and physical therapists.” One of the keys to Matheny’s educational philosophy is its interdisciplinary approach – integrating therapy treatment, social services and psychology into the educational program. The expertise of speech-language pathologists, physical and occupational therapists, social workers and psychologists is always available and is provided in collaboration with the classroom teachers.

Throughout her college years, Friedman had done field work, but it was mostly with an older population, often with recovering stroke victims. So, the summer she volunteered at Matheny was her first experience working with a young population and with people whose disabilities had been with them from birth. “My first day volunteering at Matheny,” she recalls, “I was with some of the adults, and they immediately struck up a conversation with me. They were asking about me and school and everything. I was the shy one.” The students and patients at Matheny, Friedman says, “are just so special.” She remembers a moment during her internship when, “one of the kids looked at me and grabbed my hand. He said, ‘I’m really glad you’re here. You’re my best friend.’”

Friedman completed her internship in September, and “if there had been an opening in recreation therapy at Matheny, I’d have done it in a heartbeat.” Instead, she is interviewing at other organizations and says, “I’ll go anywhere where I can be hands on.” As for Matheny, “It’s just a great place. I think everyone should know about it and visit.” *Me*



Arc of Mercer Adapts Arts Access Program

Ever since he first heard of Matheny's Arts Access Program, Steve Cook had dreamed of somehow adapting it for clients at The Arc of Mercer, which provides a variety of services and programs for adults with developmental disabilities in Mercer County. Cook is executive director of The Arc of

artistic backgrounds to influence the artists' work. The two key traits they must have are: complete neutrality and patience.

Zimmerman is a practicing artist with a BFA degree from The College of New Jersey. He describes his own work as "minimalist surrealism". He participated in an intensive two-week


Acceptance and popularity of the program at The Arc has come quickly. "It has been amazing," says Joe Gleason, director of day programs. "People are always asking, 'When is it my turn?'" Adds Zimmerman: "I get bombarded when I come in the door." Acceptance has also come quickly in the community. The artwork has already been exhibited



Mercer, whose mission is to empower all people with developmental and intellectual disabilities to choose and realize their goals. "I cold-called and invited myself up to Matheny for a tour," he recalls, "so I could learn how the program worked. I knew I wanted someday to bring it here." When some funding became available, Cook hired an artist, Eric Zimmerman, and had him trained in the Arts Access method of facilitation. Facilitators carry out the physical functions that disabled artists cannot do on their own, but facilitators must not allow their own professional

training program with Arts Access staff members and artists. Although Arc clients can often hold their own paintbrushes and speak (something many Arts Access artists cannot do), the philosophy, Zimmerman says, is the same. Keith Garletts, Arts Access facilitation manager, agrees that, "the core principles are the same," adding that, "Eric was great to work with. He was very receptive to learning the process, and the experience of learning with our clients forced him out of his comfort zone. It forced him to think in a different way."

at the Ewing Municipal Building, and there are plans for other exhibits at The Grounds for Sculpture in Hamilton Township and Artworks in Trenton.

But perhaps most important of all is the impact the program has on the artists, allowing them a new method of self-expression and self-esteem. As Zimmerman asks typical questions such as, "Do you want tape on the inside or outside?" and "How big do you want the triangle to be?", Wayne Sallie, the artist answering him, adds a statement of his own: "I'm happy," he says. "I'm an artist." 

HONOR ROLL OF DONORS

I/M: In Memory ~ I/H: In Honor

Matheny Medical and educational Center is indebted to the 1,239 donors who have so graciously supported Matheny's programs and services during this 12-month time period. This honor roll represents gifts received during our fiscal year 7/1/10 through 6/30/11. The next honor roll of donors published will represent gifts received during the period from 7/1/11 through 6/30/12. We extend our sincere thanks to the following supporters as we also recognize those individuals who were honored or memorialized through these generous gifts.

\$25,000 +

Delta Dental of New Jersey Foundation, Inc.
Ms. Jill Friedlander and Mr. Michael Goroff
Mr. and Mrs. Tomas Friedlander
Friends of Matheny
Johnson & Johnson Somerset County Companies Healthcare Fund
Mr. and Mrs. Daniel McLaughlin
Mrs. Betsy S. Michel
Poses Family Foundation
I/H Bruce Fisher
WCBS-TV
\$10,000 - \$24,999
Affinity Federal Credit Union
The Blanche and Irving Laurie Foundation
BTIG, LLC
Mr. Michael Frascella
Jockey Hollow Foundation
Johnson & Johnson Family of Companies Fund
Morris & Clara Weshnak Family Foundation, Inc.
SJP Properties
The Tyler Foundation
Mr. and Mrs. Frank Walsh, Jr.
\$5,000 - \$9,999
Bady Foundation
Peapack-Gladstone Bank
Porzio Bromberg & Newman P.C.
Ms. Sandra Stark
and Mr. James Mersfelder
\$2,500 - \$4,999
Art Muglia Memorial Golf Outing
Mr. and Mrs. Thomas Carragher
I/H Casey Carragher
Mr. and Mrs. Percy Chubb, III
Church & Dwight Employee Giving Fund, Inc.
Delta Dental of New Jersey, Inc.
Mr. and Mrs. John Fox, III
The Frank Foundation
Lewis Brounell Charitable Trust
New Jersey Charity Racing Days
Partlow Insurance Agency, Inc.
Patrick's Pals, Inc.
\$1,000 - \$2,499
Ms. Mary Ellen Anderson
Dr. and Mrs. James Aragona
I/H Alan Zweibel
I/M Edwin Sarti
I/M John Valentino
I/M Nancy Bonamo
I/M Rusty Hirsch
I/M Ruth Schwartz
I/M William F. Storey
Mr. Douglas Bryant
Cassa Family Fund
for Charitable Giving
Mr. and Mrs. John W. Cembrook

Check Point Software Technologies, Inc.
Collector Car Vault, LLC
I/H Jonathan Buiniewicz
Cretans' Fraternity
Mr. and Mrs. Robert Donahue
Dr. Gary E. Eddey
Erika Record LLC
ExxonMobil Foundation
Mr. and Mrs. Venkat Gadde
Dr. and Mrs. Richard M. Goldrosen
I/H Bari-Kim Goldrosen
I/H Regina G. Loew
Mr. William S. Guttenberg
Mr. Richard Harter
Mr. and Mrs. Ralph Hautau
I/M Joshua Hautau
Mr. and Mrs. Peter Holloway
Horizon Blue Cross/Blue Shield of NJ
Mr. and Mrs. Stuart M. Kipilman
Knights of Columbus #11386
Mr. Theodore Manousakis
Mr. and Mrs. Joseph McCabe, Jr.
Medical Express
Mr. and Mrs. Mark O'Connell
Mr. Dale Ponikvar
Ms. Doreen L. Rhodes
I/H Michael J. Taurozzi
Mr. and Mrs. John Roll, Jr.
Mr. Glen Rosenthal
Todd Hans Rothpletz Foundation, Inc.
I/H Raven Bennett
Sandy Family Foundation
Mr. and Mrs. Carlo Simoni
Mr. and Mrs. Gary Squires
Summit Associates, Inc.
Mr. and Mrs. David Sott
I/H Shane Sott
Mr. David Teiger
The George W. Bauer Family Foundation
The US Charitable Gift Trust
Mr. and Mrs. Alan E. Turovlin
Village Office Supply
Dr. and Mrs. Ronald J. Yedloutschnig
I/H Alicia A. Yedloutschnig
\$500 - \$999
Mr. and Mrs. Richard Ambroziak
Dr. and Mrs. David Belanger
Ms. Amy Friedlander
and Mr. Jesse Berg
I/H Louise Goroff
Bernards High School
Bonanno Real Estate Group I
Mr. and Mrs. Bruno Bosacchi
I/H Alessandro Bosacchi
Mr. and Mrs. David Y. Burman
I/H Samuel Heisler
I/M Shlomo Halfin
Ms. Doris Burman
Chrysalis Pharma Consulting, LLC

Mr. and Mrs. Thomas Cochran
Ms. Joan Cosgrove
I/M Linda Bednarz
Dixon Hughes Goodman
Mr. and Mrs. John Dreher
I/M Jason Christie
Druskin Family Foundation Inc.
Mr. and Mrs. Louis Feuerstein
Mr. and Mrs. Charles Fieramosca, Sr.
I/H Charles Fieramosca
Mr. and Mrs. John Garrity
Mr. and Mrs. Donald Gordon
I/M Jason Christie
Mr. and Mrs. Douglas Harter
Mr. and Mrs. William A. Kraiss
Mr. and Mrs. David Langlois
Mr. and Mrs. Roderick Lewis
Loyalkaspar, Inc.
I/H Alan Sampson
Mathtopian Preparation, Inc.
I/H Rasheedah Mahali
Mr. and Mrs. Jon Meisel
Mrs. Mary P. Morris
National Basketball Association
Mr. and Mrs. Joel Oberman
I/H Allyson Merer
ParenteBeard LLC
Mr. and Mrs. George Peck
Mr. and Mrs. Thomas J. Rentko
I/M Lucile M. Huggins
Dr. and Mrs. Arnold H. Rosenheck
Mr. Bruce Ryerson
Ms. Virginia F. Schiavelli
Mr. Henry B. Schram
Mr. Craig Seligman
I/H Casey Carragher
ShopRite of Oakland
I/H Barri L. Tabak
Skanska USA Building Inc.
Skylands BMW Riders
I/M Jason Christie
Miss Audrey Snyder
Sudler Foundation
Mr. and Mrs. Michael Tanenbaum
The Source Group, LLC
Mrs. Cynthia K. Ulrich-Saunders
I/H Jaime L. Barnes
UNICO National
Ms. Cathleen Wild
\$100 - \$499
Ms. Patrice Ablack
I/H Marlisa Johnson
and *Rasheedah Mahali*
Mr. and Mrs. Joseph Abrams
Acco Brands
ActiveUSA/RaceGate.com
Activus Solutions, LLC
Mr. and Mrs. Louis Adelson
Mr. Richard Adelson
Advance Realty
I/M Patricia A. Kerwin

Ms. Marnia Allis
Mr. Donald Alvarez
Mr. and Mrs. Michael Ambroziak
Mr. and Mrs. Lars Andersson
Ms. Elizabeth Andolino
Ms. Paula Antin
Ms. Linda S. Aronson
Artistic Interiors
I/H Bryan Desatnick
Mr. Chris Asbell
Atlantic Sprinkler Corp.
Mr. and Mrs. Benjamin R. Bader
Mr. and Stephen M. Baloga
I/M Alan G. Cruse
Mr. and Mrs. Edward Banks
Mr. and Mrs. Frederick Barnes
Mr. Stephen Beasley
Mr. and Mrs. Lyman Beatty
I/M Ryan Beatty
Ms. Katherine B. Bezuyen
I/H Michael J. Taurozzi
Ms. Roseanne Bischof
Mr. Thomas J. Bitar
Mr. and Mrs. S. Robert Blitstein
Ms. Jaime Bossary
Mr. and Mrs. Kenneth Boszczuk
Dr. and Mrs. J. Andrew Bowe
Mr. George G. Bracken, Jr.
Brand4Market
I/H Matheny Staff
Ms. Jeanne C. Brelle
Dr. Carole Brown
Mr. and Mrs. John R. Brunner
I/H Michael J. Taurozzi
Ms. Ann Burke
Mr. Paul Butler
Ms. Lisa Cairli
Ms. Mary Beth Campau
Mrs. Deirdre Carr
Mr. and Mrs. James H. Carroll
I/M Lucile M. Huggins
Mr. Finn Caspersen, III
Ms. Marion Ceruzzi
Charles Schwab & Co., Inc.
Mr. James Chow
Mrs. Catherine Church
Mr. Peter J. Churchill
Ms. Heather R. Ciavatta
I/H Michael J. Taurozzi
Cleanest Office Environment, Inc.
Mr. and Mrs. Curtis D. Cleland
I/M Loretta C. Keary
Mr. Lawrence P. Cohen
Mr. Seth A. Cohen
Mr. John Cole
Mr. James Collity
Mr. and Mrs. Charles Connolly
Mrs. Mary M. Corrado
Ms. Joan E. Coyne
Dr. and Mrs. Charles Cozewith
Chris Creamer

Ms. Tammy Culp
Mr. Joseph Cuomo
I/H Michael J. Taurozzi
Mr. Ronald J. Czajkowski
Mr. and Mrs. Rod Danziger
Mr. and Mrs. Robert F. Dathe
Mr. James M. DeCoster
I/M Arleen F. DeCoster
Mr. and Mrs. Frank Deodene
Miss Danielle DePalma
Mr. and Mrs. Eric L. Derwid
Mr. and Mrs. Donald Detgen
Mr. Marino Dobrich
Mr. and Mrs. Joe Dolan
Ms. Lisa Donoghue
Mr. Stephen G. Dovala
Mrs. Rita M. Duane
Dr. and Mrs. David Dunkle
I/H Gregory Kuhrt
Mr. and Mrs. Frank Duplissis
I/H Janice E. Taurozzi
I/H Michael J. Taurozzi
Mr. Robert Dyer
Mr. Alex Dzhandzhugazov
I/M Mark W. Cornely
Dr. Robert W. Edwards
Mr. and Mrs. Anthony Emposimato
Mr. and Mrs. Kenneth Ernst
Mr. and Mrs. Benjamin Ervin
I/H Kaila Jones
Mr. and Mrs. Thomas A. Ewig
Mrs. Eleanor E. Fahey
Mr. Juan C. Fajardo
Ms. Carol Falzo
I/H Janice E. Taurozzi
I/H Michael J. Taurozzi
Ms. Judith M. Farrell
Mr. Frank Fazio
Mr. and Mrs. John Fehlauer
Mr. Jose M. Fernandez
Mr. Andrew Flanagan
I/M Mark W. Cornely
Mr. Harold J. Fletcher
Mr. and Mrs. David Flibbert
Mr. and Mrs. Thomas Flynn
Mr. and Mrs. Victor Flynn
I/M Martin DeMarzo
Mr. and Mrs. Christopher Forbes
Mr. and Mr. David Foster
Fresh
Mr. and Mrs. Ian Friedel and Family
Ms. Anne Fritz
Mr. and Mrs. Frank Fuller
I/H Jill Friedlander
Ms. Grace Galvin
I/H Deborah Eike
Mr. Gary Gambetta
Mr. and Mrs. Joseph Garrity
Dr. and Mrs. Jeffrey Garstein
Mr. and Mrs. Herbert Gernert, Jr.
Mr. and Mrs. Randy Gerstl

Mr. and Mrs. Pradip Ghosh-Dastidar
Mr. and Mrs. Peter Gilhuley
Mr. and Mrs. Vincent Gilligan, Jr.
Mr. and Mrs. Joshua D. Gleiber
Mr. and Mrs. Paul Glickman
Mr. and Mrs. Stephen Goin
Mr. Donald R. Goldman
I/H Brad Goldman
Mr. Marc T. Goldstein
Mrs. Julie Goldstrom
Mr. Daniel L. Goroff
I/H Louise Goroff
Mr. Ethan Goroff
Mr. and Mrs. Michael Gower
Grace Episcopal Church
Mr. and Mrs. Alan Greener
I/M Lucile M. Huggins
Mr. and Mrs. Robert M. Grohol
Mr. and Mrs. Charles Grzeskiewicz
Mr. and Mrs. Wayne Guberman
Dr. and Mrs. Louis Gubitosa
Mr. and Mrs. Bill Guida
Ms. Helene Gurian
I/H Bozena Garghty
I/M Mary and Harold Schrader
Hartranft R. V. Services
I/H Matheny Staff
Ms. Toby Hayer
I/M Mary and Harold Schrader
Ms. Doris Burman
and Mr. Cliff Heisler
Mrs. Debra Heller
Mr. and Mrs. Peter E. Henry
I/H Christopher Henry
Ms. Ellen Herman
Miss Emily Hess
Mrs. Brenda Hoagland
Mr. Harry L. Hoffman, Jr.
I/H Christopher Ryan
Mr. Daniel Hogerty
Mr. and Mrs. Walter Hohnacki
Mr. and Mrs. Arthur Holden
I/H Peter H. Holden
Mr. and Mrs. David Holden
I/H Peter H. Holden
Mr. Kenneth Holvea
Hope Church House of Prayer
& Evangelism
Mrs. Holland Hopkins
Mr. and Mrs. Harry Horn
I/H Ruth Horn
Mr. and Mrs. Jimmy Horowitz
Mr. and Mrs. William Horton
Ms. Deborah Hosbach
Mr. and Mrs. Daniel Hotko
Mrs. Eleanor Howes
Mr. and Mrs. Charles M. Huck
Mrs. Myrl Jean Hughes
I/H Charles H. Matheny
Mr. and Mrs. Robert Hughes
I/H Joan Garniss

While every effort has been made to ensure accuracy of our donor lists, errors and omissions in this report may have occurred. Our supporters are assured of our appreciation for their generosity, and we apologize for any inaccuracies in this publication. We would kindly appreciate having them brought to our attention and we will make every effort to present corrections in subsequent issues of Matheny Matters.

The ILA Foundation
Mr. and Mrs. John James
/M Edwin W. Laffey
/M Helen Cole
/M Madeline P. Borman
Mr. Jamison Jeff
Mr. and Mrs. Edward Johnson
/M Patricia A. Kerwin
Ms. Barbara Johnston
Mrs. Jill Jones
Ms. Heather Jordan
Jorge O Cordova Inc/JC Dental
Mr. and Mrs. Alex Josephson
Mrs. Betty Ann Kaltnecker
Mr. and Mrs. Michael Kaminski
Dr. and Mrs. Scott J. Kantro
Mr. Mark Kaplan
Mr. and Mrs. Ira Kapp
Mr. and Mrs. Stanley Karczynski
Mr. and Mrs. Marc Karetsky
Mr. and Mrs. Marvin Kelly
Mr. John Kimball
Kiwanis Club of the Chathams
Mr. and Mrs. Jeffrey Knight
Knights of Columbus #5730
Ms. Lauretta F. Koenig
Mr. John Kohlmeier
/M Mark W. Cornely
Mr. and Mrs. David Kott
/H Thomas R. Chesson
Mr. Shane Kramer and Ms.
Maureen Kramer
Mr. and Mrs. Samuel Kriegman
Dr. Phillip LaBove
/H Michael J. Taurozzi
Mr. and Mrs. Richard Lan
Mr. and Mrs. Sheldon Landau
/H Bernard Desatnick
Mr. Kenneth E. Lasch
/H Mary Keubler
Mr. and Mrs. Fred Lash
Mr. and Mrs. Justin Lash
Ms. Ruth Stevens
and Mr. Steve Latus
Mr. and Mrs. Jim Lavelle
/M Jason Christie
Dr. and Mrs. Gerald Lefever
Ms. Olha Lesko
Ms. Donna Lewis
/H Andrew J. Lewis
Mr. and Mrs. Evan
and Amy Lieberman
Mr. and Joseph Longo
/M Patricia A. Kerwin
Drs. William and Julie Lupatkin
Mr. and Mrs. Michael Lynch
Mrs. Carolyn Lyon
Mr. and Mrs. Richard Magee
Ms. Patricia Majcher
Dr. Lauren Maldonado
Mr. Mitchell Malzberg
Manasquan Savings Bank
Ms. Adriana Manousakis
Mr. Paul Mantell
Mr. and Mrs. Alan Martin
Mrs. Robin Martin
Mr. and Mrs. Kevin Martyn
/M Patricia A. Kerwin
Mr. and Mrs. Seth Mathey
Dr. Catherine Mazzola
and Mr. Steven Mazzola
MCC Inc.
Drs. Christopher and Susan McCawley

Mrs. Jayne McCawley
Mrs. Lanore McDonagh
Mr. Christopher McDonald
Mr. and Mrs. Stephen McDonald
Mr. and Mrs. Thomas McGeough
Mr. Robert E. McGowan
Mr. James McKeon
Ms. Laurie McLeod
/H Linda Frankshun
Ms. Erika Jean McNeil
Mrs. Deidre McQuaide
Medco Health Employee
Giving Campaign
Dr. Alba Mendez Morales
Merck Partnership For Giving
Mr. and Mrs. Barry Merer
Mr. and Mrs. Stanley Merer
/H Allyson Merer
Metro Race Forum
Ms. Suzanne Miceli
/M Linda Bednarz
Mr. and Mrs. Christopher Michaels
Middlesex Cnty College Police
Ms. Ann S. Miller
/H Sue Miller
Ms. Lisa Miller
Mr. and Mrs. Gordon Millsbaugh, Jr.
Ms. Marilyn M. Minardi
Mrs. Jane Mitnick
Mr. and Mrs. Jack Monett
/M Patricia A. Kerwin
Mr. and Mrs. Anthony Monte
Mr. and Mrs. Robert Morris
/M James R. Morris
Morristown-Beard School
Ms. Tiffany Mortellito
Mr. and Mrs. Kevin Murphy
Musconetcong American
Legion Post 278
Dr. Jerry Nagler
Mr. and Mrs. Rasik Nagrecha
Ms. Barbara W. Nathan
Naturescapes Landscape
Specialists, Ltd.
Mr. and Mrs. Rick Neuman
Ms. Linda Newsome
Mr. and Mrs. Edmund Niedzinski
Mr. and Mrs. Tom Nobile
Mr. Wayne Norman
Dr. and Mrs. John O'Connor
Mr. and Mrs. Walter H. Offermann
Mrs. Eunice Oh
Mr. Fred Okun
Dr. and Mrs. James M. Oleske
Ms. Kathleen M. O'Malley
Mrs. Christiane Oster
Mr. and Mrs. Richard H. Otten
/M Daniel Otten
/M Eleanore Wells
Ms. Clara Pachomski
Mr. and Mrs. James Pellicane
Mr. and Mrs. JC Pelusi
Mr. and Mrs. Neil Perlman
Mr. and Mrs. John Petriano
Mr. and Mrs. Daniel Petrozelli
Mr. and Mrs. J. William Petty
Mr. and Mrs. Clifford Pfluger
Mr. and Mrs. Mark Piccolo
Mr. Andrew Porter
Ms. Jill E. Porter
Mr. and Mrs. Dennis Posen
/M Hilda Ruppert Maloney
Ms. Elizabeth Propp

Prudential Foundation
Mrs. Louise Rapkin
Mr. John Reck
/M Robert R. Williams
Mr. and Mrs. L. Keith Reed
Mr. and Mrs. Douglas Rettew
Mr. and Mrs. Daniel C. Rice
Mr. Todd Richheimer
Mr. and Mrs.
Matthew B. Roggenburg
/H Allyson Merer
Mrs. Michelle Ronga
Ms. Lauren Ross
Mr. Lawrence Ross
Mr. and Mrs. Robert Ross, Sr.
Mr. Dan T. Ryan
Mrs. Maureen Ryan
S. P. Richards Co.
Mr. and Mrs. David Sachs
/H Bryan Desatnick
Dr. R. Gregory Sachs
Mr. and Mrs. Mark Salamone
Mr. Richard M. Sandler
Mr. and Mrs. Alan Sarokhan
Mr. and Mrs. John
and Barbara Saylor
Sayreville War Memorial High School
Mrs. Catherine M. Schanz
Mr. and Mrs. Eric Schapiro
/H Bryan Desatnick
Ms. Alice Schenker
Mr. and Mrs. Benedict Scheps
Mr. and Mrs. Donald Schnoor
Mr. and Mrs. John L. Schumacher
Ms. Eileen Schwalb
Mr. and Mrs. Ronald Schwarz
Mr. and Mrs. Richard Schwenn
/H Gerald Tavares
/H Karen Deland
Mr. and Mrs. Roy Scott
Second Chance Thrift Shop
/M Archibald D. Beiser
/M Joseph S. Kneser
/M Maureen Goree
/M Robert Martin
Sernio's Auto Body
Ms. Lisa Serrani
Dr. and Mrs. Robert Shack
Dr. and Mrs. Lawrence Shampain
Miss Katie Shaw
Mr. L. Marc Shegoski
Mr. and Mrs. Jackson Shepard
ShopRite Waverly Markets
Mr. and Mrs. Russell Sibley
/M Mark W. Cornely
Mr. and Mrs. Alexander B. Silvey
/M Anne, David and Carl Edelman
/M Evelyn & Benjamin Silvey
Mr. David Singelyn
/M Patricia A. Kerwin
Mr. and Mrs. Paul Siniawer
Ms. Susan M. Slaff
Mr. and Mrs. Mark Smith
Mr. Matthew Smyth
Ms. Beth Solomon
/M Mark W. Cornely
Somerset Savings Bank
/M Patricia A. Kerwin
Mr. and Mrs. Tom Spiesman
Mr. and Mrs. David Sprandel
Mr. Robert Stanaway
Ms. Anne Linden Steele
Mr. and Mrs. Edward Steele

Mr. and Mrs. Klaus Steiner
Mr. and Mrs. Stanley R. Stevinson
Mr. and Mrs. Charles Stoja
Mr. and Mrs. Dan Sullivan
Mr. Sylvester L. Sullivan
Ms. Beverly Swart
Mr. Frank J. Sweeney, Jr.
Mr. and Mrs. Vincent Sweeney
Mr. and Mrs. Mark Taddeo
Take Shape For Life
Miss Olivia Tang
Mr. John Taurozzi
/H Michael J. Taurozzi
Mrs. Margaret Teillon
Ms. Susan Telesmanic
Mr. and Mrs. Eugene Tendler
Mr. and Mrs. Adam Thaler
The Garber Family
Mr. Greg Thibault
Mr. and Mrs. Norman Thompson
/M Michael N. Thompson
Mr. and Mrs. William Thompson
Mr. and Mrs. Edward Thornton
/H Gregory Kuhlert
Ms. Joan M. Thuebel
Mr. Bruce Toben
Toms River Sheet Metal Co, Inc.
Trenton Veterinary Hospital
Mr. Sarino Tropeano
Truist
Mrs. Deborah Tyler
Mr. and Mrs. Thomas Uhlman
United Way of
Southeastern Pennsylvania
Mr. and Mrs. Russell Verducci
Mr. Richard Vinopal
/H Edward Scott
Mr. and Mrs. Victor Vuskalns
Mr. Ralph Wade
Mr. and Mrs. Bill Walsh
/H Liz Geraghty
Mr. and Mrs. Henry Walsh
Mr. and Mrs. David I. Weber
Mr. and Mrs. E. Weeks, Jr.
Mr. and Mrs. Albert Weiner
Wells Fargo Advisors, LLC
/M Patricia A. Kerwin
Mr. James Wenk
Mr. and Mrs. Michael White
/M Martin DeMarzo
Mr. and Mrs. Alan Willemsen
Mrs. Lois Williams
/H Robert R. Williams
/M Robert R. Williams
Mr. Mark Williams
/M Robert R. Williams
Mr. and Mrs. Barclay J. Wilson, Jr.
Ms. Frances G. Woolley
/M Eric S. Corbin
The Wright Advantage Group
Mr. and Mrs. Frederic E. Wynn, Jr.
Mr. and Mrs. James Yedloutschnig
Mr. J.W. Yeldell
/M Mark W. Cornely
Mr. Stephen Yosh
Ms. Stephanie Young
Mrs. Sidney G. Zagoreen
Up to \$99
89 Main Street
A&P of Basking Ridge
Ms. Christie Adams
Mrs. Jessica Adams
Mr. Molly Adams

Mr. and Mrs. Dandridge Adamski
Mr. Robert Addressi
Mrs. Dianne Ahto
Ms. Yvonne G. Albericci
Mr. Lou Albruzzese
Mr. and Mrs. William Alford
/M Patricia A. Kerwin
Mr. Leonard F. Ambroziak
/H Daniel Ambroziak
Mr. Jagdish Amin
Mrs. Valerie Byrd Anderson
and Mr. Ronald Anderson
Mr. Steven Anderson
Mrs. Deborah Andreoni
Anonymous
Mr. John F. Appag, Jr.
Mrs. Carmen Aponte
Mr. and Mrs. Kenneth Arakelian
Ms. Nataliz Araujo
Ms. Susana Arenas
Mr. and Mrs. Graham
Argent-Belcher
/M Lucile M. Huggins
Mr. Edward Augustyn
/H John and Pamela
Cembrook and Family
Ms. Alonzrea Austin
Ms. Irene Ayoub
Mr. and Mrs. Alfred Bacchetta
Mr. and Mrs. Elaine Backer
Mr. and Mrs. Joseph Bakes
/M Patricia A. Kerwin
Mr. Robert Baldwin
Mr. Jason Barber
Mr. Todd Barnes
/M Mark W. Cornely
Mr. and Mrs. Armen Basmajian
/H Samuel Heisler
Mr. and Mrs. Steven Battitori
Ms. Anna Beam
Ms. Janis H. Beaver
/H Matheny Students
Ms. Jeanne Bednar
Mr. and Mrs. Andrew Bednarz
/M Linda Bednarz
Mr. and Mrs. Stanley H. Belchik, Jr.
Ms. Lucy Benjamin and Mr. Clifton Page
/H Jill Friedlander
Mr. Christopher Benko
Mr. Wayne Bennett
Ms. Alexis Berg
Mr. and Mrs. Michael Berg
Mr. and Ms. Michael Berger
/M Robert R. Williams
Mr. and Mrs. Robert Beringer
Mr. and Mrs. Kenneth Bernstein
/M Mark W. Cornely
Ms. Mariela Berrio
Mrs. Barbara Best
/H Brad Goldman
Mr. and Mrs. David Bialoglow
Mr. and Mrs. Eric Birkholz
Ms. Carol B. Black
Mr. and Mrs. Donald R. Blair
Ms. Sharon Blake
/M Mark W. Cornely
Mr. and Mrs. Richard Blashfield
/M Robert R. Williams
Mr. and Ms. Brian Blath
Mr. Brian Block
Mr. and Mrs. Arthur R. Bogdan
/H Lyndsay Fuller

Ms. Susan Boland
/M Jason Christie
Mrs. Arlyne Bolandi
Mr. Ralph Bolognese
Mrs. Nancy Bonello
Mr. and Mrs. Stephen Bonk
/H Ryan O'Connor
Mr. and Mrs. David E. Bourdeau
Ms. Regina Bourke
/M Patricia A. Kerwin
Ms. Cristina F. Bowen
Mr. and Mrs. Sara Bowerbank
Mr. and Mrs. Robert B. Boyle
Mr. Richard Braslow and Family
/M Patricia A. Kerwin
Ms. Elizabeth Brewer
Mrs. Robyn Brinkerhoff
Mr. and Mrs. Joseph Brislin, III
Ms. Amanda Brown
Mr. and Mrs. Stephen Brown
Ms. Theresa Brown
Mr. Walter Brown
Mr. and Mrs. Lee Brush
Mrs. Patricia Buchholz
Mr. and Mrs. Richard Buczek
/M Steven Buczek
Mr. Josh Burke
Mr. and Mrs. William Burns
/H Karen Frascella
Mr. and Mrs. Scott Byers
Mr. Ian Byrkit
Mr. and Mrs. Brian Byrnes
Mr. and Mrs. Agatino Cacciola
/M Joshua Hautau
Cafe Azzurro
Ms. Denise A. Calkin
Mr. and Mrs. Timothy Callaghan
Mrs. Rita Card
Mr. Michael Carleton
Ms. Kathleen Carlyon
Mr. and Mrs. Brian Cartwright
Mr. Philip Caruso
Mr. and Mrs. Daniel Cary
Mrs. Betsy Casano
Mr. and Mrs. David Case
/M Loretta C. Keary
Mrs. Emily Caspersen
/H Ben Scott Caspersen
Dr. Javier Castro
Dr. and Mrs. Thomas Cataldo
/H Ryan O'Connor
Ms. Patricia A. Cats
Mr. and Mrs. Ronald Cattafi
Mr. and Mrs. Norman Cella
/H Christopher Asbell
Mrs. Jill Cerreta
Mrs. Cindy Cetani
Dr. and Mrs. Alan Chanin
Mr. Theodore Chen
Ms. Edwina J. Chesky
Mr. Louis Chirico
Mr. Bruce Christopher
Ms. Christina Chujko
Mr. and Mrs. Peter Ciccone
/M Christopher Butler
Mr. and Mrs. Frank Cioppettini, Jr.
Mr. Louis Cirangle
Mr. and Mrs. John Cittadino
Ms. Dolores C. Clark
Mr. Durell Clark
Mr. and Mrs. Michael J. Clayton
Ms. Millie Cleary

Dr. Jack Clemente and Dr. Amy Green-Clemente Mrs. Janine Cloutier Mr. and Mrs. Rocco Colantuono <i>/M Steven Buczek</i> Dr. and Mrs. Richard D. Colavita Mr. and Mrs. Nathaniel Collins Mr. Richard Connolly Mr. and Mrs. Kevin Conway Mrs. Palma Cook Mr. and Mrs. Robert Cooley, III <i>/M William J. Fleming, III</i> Mr. Robert Corbo Mrs. Carol Cordoma <i>/M Alan G. Cruse</i> Ms. Leslie Cornely <i>/M Mark W. Cornely</i> Mr. and Mrs. Thomas Cornely Ms. Barbara A. Costa Mr. and Mrs. Charles Costello Mrs. Valentina Costello Costo Ms. Suzanne Countryman Mr. and Mrs. Arthur Crane <i>/M Linda Bednarz</i> Mr. and Mrs. Christopher Cree Mrs. Norma Jean Creelman Mr. Mark Cromer Ms. Linda Browne Crouthamel <i>/M John L. Balaam</i> Mr. and Mrs. Domenick Cucinello Mr. and Mrs. Thomas J. Cummings <i>/M Patricia A. Kerwin</i> Mrs. Isabella Curry Ms. Kelly Curtin Mr. and Mrs. Robert W. Curtis Mrs. Kornelia Czipa Mrs. Jamie Daggett Mr. Robert D'Agostino Mrs. Patricia Dakis Mrs. Claire J. Dale Mr. Roger Damon Zohra and Mohamed Dattoo Mrs. Nell D'Auria Mrs. Amy Davenport Mr. and Mrs. John Davidson Ms. Phyllis Davis Ms. Linda Deane Mr. and Mrs. George Decker Mr. and Mrs. Michael Dee Mr. and Mrs. Russell Deinstadt Mr. and Mrs. Joseph Deiulio Ms. Barbara Delaney Mr. and Mrs. Matthew DeLany <i>/H Joe Delany</i> Mr. and Mrs. Alan Delimon Ms. Angela Dello Mr. and Mrs. Ralph DeLorenzo Mr. Benjamin Delvento <i>/M Martin DeMarzo</i> Mrs. Donniss DeMouthie Mr. and Mrs. Jack Dempsey Dr. Dean Dent and Ms. Anita Spivey Mrs. Valerie DePalma Mr. and Mrs. Bernard Desatnick <i>/H Myra Landau</i> Mrs. Helen Deverin Mr. and Mrs. Edwin Diaz Ms. Safy Diedhiou Mr. and Mrs. Richard P. Diegnan Mrs. Susan Dobrinsky Mr. and Mrs. Scott Dolph <i>/M Jason Christie</i>	Mrs. Jean C. Donahue <i>/H Casey Carragher</i> Ms. Patricia Ann Tine and Mr. Philippe Dordai Mrs. Pamela D. Dougherty Mr. and Mrs. Ryan Dowd Mr. Bill Dudjoc Mr. and Mrs. Kevin Duffe Deacon John Dugger Mrs. Susan Dumas Miss Amy Duncan Mr. and Mrs. John D'Urso <i>/H Hank and Rosemary Sullivan</i> Ms. Susan Dyer Mr. and Mrs. Hugh Dynes E & A Supply <i>/M Patricia A. Kerwin</i> Mr. and Mrs. William Eifert Mr. and Mrs. Stuart Elby Mr. Vanica M. Eldridge Ms. Victoria Lyn Emanuel Ms. Virginia L. Estabrook <i>/M Maureen Goree</i> Mr. and Mrs. Alan Evans Mrs. Audrey Evly Mr. and Mrs. Wayman Everly Mr. Andrew Ewaskiewicz Ms. Pamela Fales Mr. and Mrs. John Fallone Mr. and Mrs. Peter Farley Mr. and Mrs. Stuart Feenstra <i>/M James R. Morris</i> Miss Christine Feichtel Mr. and Mrs. Bruce Fendell <i>/M Geraldine Geraghty</i> Mr. and Mrs. John Feneck Ms. Cheri Fenton Mr. John G. Fesken <i>/M Michael Fesken</i> Mr. and Mrs. Carl Feusse <i>/H Carole Gray</i> Mr. and Mrs. Ed Fiallo Mr. and Mrs. Oliver D. Filley Mrs. Nancy Finkelstein Mr. and Mrs. Matthew Finney Mr. William P. Fisher Mr. and Mrs. Sean Fitzgerald Mr. and Mrs. William Flatt Mr. and Mrs. Keith Fleischman <i>/M Beverly K. Bain</i> Mr. and Mrs. William Fleming <i>/M William J. Fleming, III</i> Mr. and Mrs. Douglas V. Ford Mr. and Mrs. Robert Forsyth Mr. and Mrs. Lawrence Forte Ms. Lois Fox <i>/M Robert R. Williams</i> Mr. Marvin Fox Ms. Ann Skudlark and Mr. Michael Fox Ms. Jocelyn E. France <i>/M Robert R. Williams</i> Mr. and Mrs. Richard Franchino Jeffrey R. Frank M.D. Mr. Minal Frank <i>/H Finn Caspersen</i> Mr. and Mrs. Paul Freda Mrs. Judith Fredericks Mr. and Mrs. P. Wayne Frey Mr. Mark Friedberg Dr. and Mrs. Peter Frisko <i>/M Amy Ring</i>	Mrs. Stacie Frost Mr. Chris Gabel Mr. and Mrs. Michael P. Gagliardi <i>/M Christopher J. Schebece</i> Mr. Robert Galante <i>/M Martin DeMarzo</i> Mr. and Mrs. Joseph Galayda Mr. and Mrs. Louis Galli Mr. Joseph Gallitelli Mr. and Mrs. Manfred Ganzer Garden State Press Clipping Bureau Mr. and Mrs. Raymond Gardner Mr. and Mrs. Albert D. Garganigo Mr. and Mrs. Robert Garrity Mr. and Mrs. Michael Gartenberg Mr. and Mrs. Timothy Gau Mrs. Patti Gebert Mr. John B. Gibb Ms. Juanita Gibbs Mr. John Gilfillan Mr. and Mrs. Paul Gillert Ms. Nora Gillespie Ms. Courtney Gilmer <i>/M Lucile M. Huggins</i> Gladstone Tavern Ms. Sheila Glassner Mr. and Mrs. Warren God Dr. and Mrs. Edward Goldberg <i>/M Jason Christie</i> Mr. and Mrs. David Goldsmith Mrs. Grace M. Goldstein Mr. and Mrs. Robert Goldstein Mrs. Randy Goodwin Drs. David and Rosalind Gordon <i>/H Ellen Bihler</i> Mr. Patrick Gorman Mr. and Mrs. Joseph Gotch Mr. and Mrs. Henry Graham, Jr. Mr. and Mrs. Robert Gregg Ms. Dana Grenert Mr. and Mrs. Robert R. Grissom Mr. and Mrs. LeRoy Gunzelman, III Ms. Lisa T. Gutkin Ms. Judy Hahn Ms. Nancy Haig Mr. and Mrs. Eric Hansen <i>/H Allen M. Gallas</i> Mr. and Mrs. Michael Hanson Mr. and Mrs. Dale Harpine <i>/M Andrew Iannone</i> Mr. and Mrs. James Harris <i>/M Allen M. Gallas</i> Mr. and Mrs. Jonathan Harris Ms. Shamilah Harris Mrs. Lynda Harter Mr. Mark Harter Ms. Lauren Hartford <i>/M Patricia A. Kerwin</i> Ms. Pat and Julia Haverland-McBride Mr. and Mrs. Bruce Hawkins Mrs. Karen Hawkins Mr. and Mrs. James Haws Mrs. Jody Healy Mr. and Mrs. James Heavener, Jr. Ms. Claudia Hesler Mr. Timothy Hesselton Mrs. Debora Hibbs Mr. and Mrs. Dave Hill Ms. Elizabeth Hodson Mrs. Deb Hoffman Hoffman's Supply	Mr. Andrew C. Holden <i>/H Peter H. Holden</i> Mr. Jeremy Hollander Mr. and Mrs. Charlie Holmes Mr. Franklin Hope Mrs. Cathy Horne Mrs. Jean A. Horton Ms. Venecia Hou Mr. and Mrs. Christopher Houlihan Mrs. Barbara House Mr. Calvin Houtz Mr. Fred Howlett Ms. Elizabeth Hull Mr. and Mrs. John Hunter Ms. Christina Iannaccone Mr. Michael Iannaconi Mrs. Mary Iannone <i>/M Walter and Marguerite Matheny</i> Ms. Theodora Immerso Mrs. Jennifer Incorvaia Mrs. Audrey H. Israel Mr. Thomas Jackson Mr. and Mrs. Dennis Jeff Ms. Sue Jensen Mr. and Mrs. Cecil O. Johns <i>/H Michael Martin</i> Mr. and Mrs. Gary Johnsen <i>/H Finn Caspersen</i> Mr. Ernest C. Johnson Mr. and Mrs. Peter Johnson Mr. and Mrs. William E. Jones Mr. and Mrs. Sanford Josephson <i>/M Robert R. Williams</i> Ms. Ellen F. Judge Dr. Joseph Juliano <i>/H Samuel DeMarzo</i> Mr. Gary Kabasakalian Mr. and Mrs. Kenneth Kaiser Kalamazoo College Mrs. Davida Kales Mr. Chris Kalwa Mr. and Mrs. Fred Kamps <i>/M Carl Shirley</i> Mr. Ira Kaplan Mr. Jeffrey Karam Mr. and Mrs. Richard Karig Mrs. Jyotsna Katragadda Ms. Evelyn Kavanaugh <i>/M Patricia A. Kerwin</i> Mrs. Marilou Kaye Mr. and Mrs. Albert Kedersha Ms. Mary Kay Kelleher Ms. Heather Kellogg Mrs. Claire Kelly Mrs. Sheila Kelly Mr. Peter Kenny Mr. and Mrs. Peter Kerns Mr. and Mrs. David Kim Ms. Elizabeth Kim Dr. Patricia Kirkish <i>/M Jason Christie</i> Mr. and Mrs. Richard R. Kitchell <i>/H Michael Martin</i> Mr. and Mrs. Mitchell Kleinman <i>/M Edwin Sarti</i> Mr. and Mrs. Hyman Kleinman <i>/M Ceil Links</i> Mr. and Mrs. William Klesch, Jr. Mr. Marlin Knight Mr. and Mrs. George Knudsen Mr. and Mrs. Paul Kochanski Mr. and Mrs. Edward L. Koenig	Ms. Ruth A. Koenig <i>/M Frederick Koenig</i> Mr. and Mrs. Vullnet Kolari Mr. and Mrs. Edward Kole Mr. John D. Konkle, II Mr. Nick Kosarych Mr. Andrew Kriegman Mr. Leonard W. Kriegman Mr. and Mrs. Peter Kristiansen Mr. and Mrs. Robert Krueger, Sr. Mr. and Mrs. Marney Krupat Mr. and Mrs. Martin Kuhl <i>/M John Kuhl</i> Mr. and Mrs. James Kuhles Mr. and Mrs. Roger Kuhlmann Mr. and Mrs. Richard L. Kuhlrt Mr. and Mrs. Matthew Kupka Mrs. Cynthia LaBar Ms. Ilona S. LaChina Mr. Chris Laird Mr. Steve Lakatos Ms. Patricia D. Lake Ms. Maggie Lam Mr. and Mrs. Brent Lambert Mrs. Cathy Landis Mr. and Mrs. Charles Lang Mr. and Mrs. Gilbert and Judy Lappen <i>/M Sally Prokoff</i> Ms. Morgan Lash Mrs. Lisa Lattarulo Mr. Raymond Laureano Ms. Francoise Lavitsky Mrs. Sue Lawrence Ms. Alesia Lee Lazorisak Ms. Erin Leach <i>/M Robert R. Williams</i> Mr. and Mrs. Mark Lederman Mr. and Mrs. Ralph A. Lee Mr. and Mrs. Mark Lehw <i>/M Mark W. Cornely</i> Mr. and Mrs. Nicholas Lemma, Jr. Ms. Luba Levenstein Ms. Jennifer Levy Mr. and Mrs. Scott Lewis Ms. Irene Lieberman Mr. Raymond J. Lillie Mr. Charles Lindmar Ms. Lori Linsey Mr. Ramon Liranzo Ms. Lucy Lobbuto <i>/M Robert R. Williams</i> Ms. Irene Loeser Ms. Allison Long Mr. Neftali Lopez Jr Mr. Agustin Lopez Ms. Barbara Lopez Mr. and Mrs. Carl Lori Mr. and Mrs. Andre' Luboff Ms. Lily Lynch Mrs. Meghan M. Lynch <i>/M Robert R. Williams</i> Mr. and Mrs. Jay MacNeill Miss Georgette Madak Mr. Stephan Maffia Mrs. Susan Magee Mrs. Diana Maldonado Mr. George H. Malgeri <i>/M Debra L. Malgeri</i> Ms. Dorothy Malone Ms. Helen Maltby <i>/M Linda Bednarz</i> Mr. Ethan Malzberg Mr. Howard Malzberg	Dr. and Mrs. Mark Malzberg Ms. Susan Mangold Mr. and Mrs. Arthur Mankin <i>/M Jason Christie</i> Mr. and Mrs. Michael Marconi <i>/M Robert R. Williams</i> Ms. Nancy Marsillo <i>/H Fredi and Sophie Marsillo</i> Mr. Antonio Massa Mr. Paul Mattheiss Mrs. Agnes L. Matthews <i>/H Beverly Solomon</i> Ms. Joyce M. Matthews <i>/M Christopher Butler</i> Mr. and Mrs. Chris Maurer Mr. and Mrs. Stephen Mauriello Mauro, Savo, Camerino, Grant & Schalk, P.A. <i>/M Patricia A. Kerwin</i> Mr. and Mrs. John May Mr. and Mrs. John S. Mazur Mr. and Mrs. Thomas McCaffrey Mr. and Mrs. Michael McCloskey <i>/M Mark W. Cornely</i> Mr. Kevin McCormick <i>/M Robert R. Williams</i> Mrs. Danielle McDonald Mr. Philip McDonald Mr. Eugene McFadden Ms. Carol McGonigal <i>/M Jennie Kerbeck</i> Mr. and Mrs. William McGovern <i>/M Patricia A. Kerwin</i> Ms. Ellen McGraw Ms. Karen McGregor Ms. Alexandra McLean Jennings Mr. Francis McMahon Ms. Maureen McNamara <i>/M Grace, Brian and Dennis McNamara</i> Mr. and Mrs. Karen McNulty Mr. and Mrs. Ralph Meola <i>/M James R. Morris</i> Mr. and Mrs. Richard Merklinger Mr. Robert Metz Mrs. Pauline Metzler <i>/M Jason Christie</i> Mr. Paul Meyer Ms. Tara Miceli Mr. and Mrs. Robert Miele Mr. and Mrs. Frank Mikorski Mr. and Mrs. James Miller Mr. and Mrs. Marvin Mirsky <i>/H Jason Weiner</i> Mr. Caesar Mistretta Ms. Nan Molofsky Ms. Deborah Monteforte <i>/H Samuel Heisler</i> Mr. Brett Moore Mr. and Mrs. Timothy Morash Mr. Kenneth Morgan Mr. and Mrs. John C. Morris Ms. Tracy Morris Mr. and Mrs. Joseph A. Morrison, Jr. <i>/H Gregory Kuhlrt</i> Ms. Mia Morse Ms. Bridget L. Morton Mrs. Melissa Moss Ms. Muriel M. Mota Mr. Michael Movsoovich Ms. Elizabeth Muldoon Ms. Susan Mullin Mrs. Migdalia Muniz
--	---	---	--	--	---

Mr. and Mrs. Michael Murray Mr. and Mrs. Thomas Murray, M.D., Ph.D. Mr. and Mrs. Bennett Murtha Mrs. Donna Mustillo Mrs. Mindi Myser Rabbi Robin Nafshi Mr. and Mrs. Leonid Natenzon Ms. Mona N. Nau Ms. Mary Beth Naumann Mr. and Mrs. Jack Needleman Mr. Darryl Neier Mr. Douglas A. Nelson Mrs. Christine News Mrs. Patricia A. Nordling <i>/H Robert T. Keary</i> Ms. Christine O'Brien Ms. K. G. O'Brien <i>/H Mark W. Cornely</i> Ms. Eileen O'Connell <i>/H Mark C. O'Connell</i> Dr. and Mrs. John O'Connor, Jr. <i>/H Ryan O'Connor</i> Dr. Robert O'Hagan Ms. Nancy Okseniuk Mr. Daniel O'Neill <i>/H Robert R. Williams</i> Mrs. Robin Osman Dr. Sara Osman and Mr. Steve Osman Miss Mary B. Oswald <i>/H William Scott</i> Mr. and Mrs. John Otchy Ms. Alise Pagano Mrs. Dawn Pagnini Ms. Holly Palma Mr. and Mrs. Carl Paltjon <i>/H Patricia A. Kerwin</i> Mrs. Haeree Park Mrs. Jenifer Parks <i>/H Patricia A. Kerwin</i> Ms. Kathleen Kurek and Mr. Robert Paski Mr. Robert P. Payne, Jr. <i>/H Robert R. Williams</i> Miss Caroline Peck Mrs. Celia Pellegrino Mr. Louis Pellegrino Ms. Laura Pentz Mr. Juan C. Perez Mr. and Mrs. Matthew Perotti Mrs. and Mr. Jennifer A. Peters Mrs. Laura Petersen Ms. Nancy Petrillo Mr. and Mrs. Craig Petruolo	Dr. and Mrs. DeWitt R. Petterson <i>/H Robert F. Terlizzi</i> Mr. Louis Pezzella Mr. and Mrs. Ethan Pfaltzgraff Mr. Henry Pfeiffer Mr. Scott Pfluger Mr. and Mrs. Thomas J. Phipps <i>/H Mark W. Cornely</i> <i>/H Mark W. Cornely</i> Mr. and Mrs. Marc Pine Ms. Helene Pliner Mrs. Erin Plourde Mr. and Mrs. Stephen Portas Ms. Jennifer Porter Mr. Thomas W. Pote <i>/H Helen E. Pote</i> Mr. and Mrs. Richard Potts <i>/H Gary Smith</i> Mr. and Mrs. John Powanda Mr. and Mrs. Mark Premo Mr. and Mrs. Eugene Price Mr. and Mrs. Steven Proctor PSEG Mr. and Mrs. Michael Pucilowski Ms. Rachel Pyke Mr. and Mrs. Brian Quada <i>/H Robert R. Williams</i> Mrs. Kathleen Rachel <i>/H Robert R. Williams</i> Ms. Michael Sean Ragiel Mr. and Mrs. Kevin Ralph Ms. Jennifer Rayho Mr. and Mrs. Robert Reavey Ms. Colleen Reh Sweeney Ms. Lisa Rennick Mr. Bill Richards, Jr. Mr. and Mrs. William Richardson Mrs. Cynthia M. Rimpo <i>/H Clifford W. Rimpo</i> Ms. Linda Rivera Mr. Miguel Rivera Ms. Kimberly Roberts Mr. and Mrs. James Robinson <i>/H Matheny Staff</i> Mr. and Mrs. Patrick Rocco Mr. and Mrs. Thomas Roche, Jr. Mr. and Mrs. Jonathan Rochelle Mr. Geoffrey Rockhill Mr. and Mrs. Robert J. Rodgers Dr. Susan Roeloffs and Mr. Fred Stine Mr. and Mrs. Robert Rollinson Mrs. Lauren Roman Mr. Michael Roman Mr. and Mrs. Dave Romlein Dr. Sharon Root	Mr. and Mrs. Stuart Rose Ms. Gail Rosen <i>/H Patricia A. Kerwin</i> Ms. Debra Ross Mr. Martin Rothfelder Ms. Megan Rozycki Mr. and Mrs. Alex Rubano Mr. Chase Rupprecht Mrs. Helen Russo Mr. and Mrs. Robert Russo and Family Mrs. Kim Ruvalo Mr. Brian Sadowski Mrs. Sue Sadowski Mr. and Mrs. Frank J. Saia Ms. Marion Saldon Mr. and Mrs. William Sandelands Mr. and Mrs. Andrew Sanford <i>/H Elizabeth B. Matlack</i> Mr. and Mrs. Antonio M. Santos Ms. Deborah Sapientza <i>/H Jason Christie</i> Ms. Janet Sautler-Hemmer Dr. Erica Saypol <i>/H Arts Access Program</i> Mr. Ira Schapiro Mr. Lee Schapiro Mr. and Mrs. Douglas Schenck Ms. Alice L. Schroeder Ms. Megan Schroeder Mr. Peter Schuenzel Mr. Michael Schwartz Mr. and Mrs. Lewis Schwarz Mr. and Mrs. Robert Schwarz <i>/H Robert R. Williams</i> Mr. Arch Seamans Mr. Warren Seamans Mr. and Mrs. Charles P. Seelinger Mr. and Mrs. Alfred Sierra Mrs. Margaret Shadwick Mr. and Mrs. Bernie Sharkey <i>/H Robert R. Williams</i> Mr. Kevin Sharkey Mrs. Caryn Shaw Mr. and Mrs. Robert Shaw Ms. Rosemary Sheridan <i>/H Linda Bednarz</i> Mr. and Mrs. Marshall Sherman Mr. and Mrs. Arthur Shulman Dr. Lynn Siebert and Dr. Donald Siebert <i>/H Dan Fenelon</i> Miss Heather Siegelheim Mrs. Michele Siegrist Mr. and Mrs. Edward J. Simko Mr. and Mrs. Paul Simms, Jr.	Mr. Jon Simoneau Mr. Erik Marra and Mrs. Amanda Simpson <i>/H Ryan O'Connor</i> Mr. and Mrs. Vincent Sinkevitch <i>/H Samuel Heisler</i> Mr. and Mrs. Cole and Amelia Smith Mrs. Hesther Smith Mr. Jarre Smith Mr. Robert S. Smith Dr. Sarah Smith Mr. and Mrs. Dennis Smyth Ms. Kathy Smyth Mrs. Christine Solewski Mrs. Renee Sopko <i>/H Matthew Detgen</i> Ms. Maria Sperone Mr. Gordon Spivak Ms. Kristin Sprows Mr. and Mrs. St. Onge Mr. and Mrs. Glenn Stackhouse Stanley Congregational Church Mr. and Mrs. Robert Stanton Mr. and Mrs. Michael C. Steele Stellar Technology Solutions, LLC <i>/H Robert R. Williams</i> Mr. and Mrs. John G. Stevens Ms. Katie Sweeney Mr. and Mrs. Neale Sweetman <i>/H Thomas Wawrin</i> Mr. and Mrs. Stanley Szymkowski Mr. and Mrs. Anthony Tammara Ms. Ning Tang <i>/H Finn Caspersen</i> Mr. and Mrs. Reuven Tarlow Ms. Ronna Tarlow <i>/H Jill Friedlander</i> Mrs. Barbara M. Taylor Mr. and Mrs. William Taylor <i>/H Edwin Sarti</i> Mr. and Mrs. Geoff Teillon Mr. and Mrs. Robert F. Terlizzi <i>/H DeWitt R. Petterson</i> Ms. Nancy Terrat <i>/H Thomas Wawrin</i> Mr. and Mrs. Donald Tereri Dr. Michael J. Terzis D.D.S.	Mr. and Mrs. Charles Theodora <i>/H Michael J. Taurozzi</i> Mr. John W. Thomas <i>/H Mark W. Cornely</i> Ms. Beth Thompson Ms. Cynthia Tice Mr. Eric Tie Miss Susan D. Todd Ms. Oddfrid Tokle <i>/H Linda Bednarz</i> Mr. Kevin Tollefson Mr. and Mrs. David Tong <i>/H David Tong</i> Mr. and Mrs. Mark I. Toporoff <i>/H Jill Toporoff</i> Mr. and Mrs. Robert Toporoff <i>/H Jill Toporoff</i> Mr. Robert L. Tortoriello Mr. and Mrs. Brian Towle Trader Joes - Florham Park Ms. Louise Trezza Miss Ly Trinh Mr. and Mrs. George Truxel Ms. Patricia Tummay Mr. and Mrs. Ed Turkot <i>/H Martin DeMarzo</i> Mrs. Sharyn Tykot Mr. and Mrs. J. Robert Ujoberg Mr. and Mrs. John Underhill <i>/H Finn Caspersen</i> Mr. and Mrs. Frank J. Unger <i>/H Austin Peck</i> Mr. and Mrs. Rosario Urriola Vakratunda, Inc. Mrs. Sheri Valley Ms. Carol Van Blargan <i>/H David C. Miller</i> Ms. Beverley Van Houten Mr. and Mrs. Roger Van Ness Mrs. Edith Van Wert Ms. Leslie Varkonyi Mr. and Mrs. Anthony Vecchio <i>/H Martin DeMarzo</i> Mrs. Eileen Vernaleken <i>/H Alan G. Cruse</i> Mrs. Cheryl Vesselli Ms. Usha Vijay Mr. and Mrs. Guy and Elaine Vinopal Mr. and Mrs. Richard Visceglia Ms. Debbie Vollaro Mr. Pascal Voltzenlugel Ms. Carolee Voorhees Zak Ms. Mary J. Waeschle Mr. and Mrs. Gary Wagner <i>/H Robert R. Williams</i>	Mr. and Mrs. John Waite Mrs. Lisa Wallick Mr. Thomas Walter Mr. and Mrs. Robert Ware, Jr. <i>/H Alicia Liptscher</i> Mr. and Mrs. Brian Warnock Mr. Scott Waterstredt Mr. Lawrence Watson <i>/H Patricia A. Kerwin</i> Mrs. Jeannine Weaver Mr. and Mrs. Frank Weber Wegmans Food Markets, Inc. Ms. Lori Frost and Mr. Jonathan Weiner Ms. Kathi Weisbecker Mr. and Mrs. William F. Welsh Mrs. Harriet R. Wendell <i>/H Arnold H. Wendell</i> Ms. Linda Westerberger <i>/H Alan G. Cruse</i> Mrs. Phyllis A. White Mr. Steven Wiley Mrs. Diane Willer Ms. Claudette Williams Mr. and Mrs. Dennis Williams <i>/H Robert R. Williams</i> Mr. and Mrs. Jess Willis <i>/H Thomas Wawrin</i> Mr. and Mrs. Peter Wilson Ms. William Matuozi and Ms. Heidi Winchman Mr. and Mrs. Peter Wolfson Dr. Dee J. Wong <i>/H Brenda E. Wong</i> Mr. and Mrs. Christopher R. Wood Ms. Linda Woodruff Mr. Eileen Woodworth Dr. Crispin Woolston Mrs. Dana Wright Mr. and Mrs. John Yedloutschnig <i>/H Alicia A. Yedloutschnig</i> Mr. Robert Yingling Mr. Gerald A. York Mr. Frederick Young Ms. Fumiko Zabik <i>/H Alicia A. Yedloutschnig</i> Ms. Cindy Zahn Mr. Frank Zegar Miss Kathleen Zegar Mr. and Mrs. Antal Zeleszko, Jr. Mr. and Mrs. Thomas Zeng Mr. Vincent Zuza
---	---	---	---	--	--

A Message to Our Supporters



On behalf of our patients, students, families, and staff, we cannot say, "Thank You" enough for your generosity in backing all the critical programs and services Matheny provides to improve the lives of the children and adults we serve.

In our efforts to communicate our messages and accomplishments to a broader audience I am pleased to announce Matheny is now fully engaged in a social media program that

includes Facebook, Twitter, Blogs, and YouTube! You can connect to these channels from links on our website homepage, www.matheny.org. Thank you once again for your ongoing support and I wish you all a Happy New Year!

Kevin Ralph, *Chief Development Officer*
908-234-0011 ext. 318 | kralph@matheny.org

**YOU CAN
BENEFIT MANY WAYS
THROUGH A PLANNED
GIFT TO MATHENY.**

Learn more by visiting
our new **Planned Giving** web
pages. A direct link is on the
Matheny home page at
www.matheny.org



Matheny Matters

65 Highland Avenue, P.O. Box 339
Peapack, NJ 07977
(908) 234-0011 • Fax: (908) 719-2137
www.matheny.org
Return Service Requested

NONPROFIT
ORGANIZATION
U.S. POSTAGE
PAID
NEW BRUNSWICK, NJ
PERMIT NO. 1091

Miles for Matheny Returns to Liberty Park

Save the Date: Sunday, April 22, 2012



We are so pleased to be returning to Liberty Park in downtown Peapack for the annual Miles for Matheny community event. This fun-packed day includes Bicycling routes through rural Somerset Hills, a Kids Fun Run, a USATF 5K race and our signature event, the Lu Huggins Wheelchair Walk. The 5K and Wheelchair Walk will begin at noon so that road closures will not disrupt services at the local houses of worship and so that all community members can join in the festivities. The schedule of events and registration information will be issued soon!

Congratulations to the top fundraisers at Miles 2011:

The Desatnick Family (*Bryan's Team*) of Basking Ridge, NJ
The Goroff-Friedlander Family (*Team L'Equipe Louise*) of Brookline, MA
The Harter Family (*Jack's Team*) of Madison, NJ
Andrew Lash (*Team Andy "Flash" Lash*) of Franklin Township, NJ
Stephanie Young of Bridgewater, NJ

The May Family (*Team Mason*) of Bridgewater, NJ
Sarah Malzberg (*Sarah's Mitzvah*) of Pottersville, NJ
Beth Misener of Succasunna, NJ
The Schapiro Family (*Team Schapiro*) of Basking Ridge, NJ